



The Secret Garden

08/09



zoemou

leather jewellery

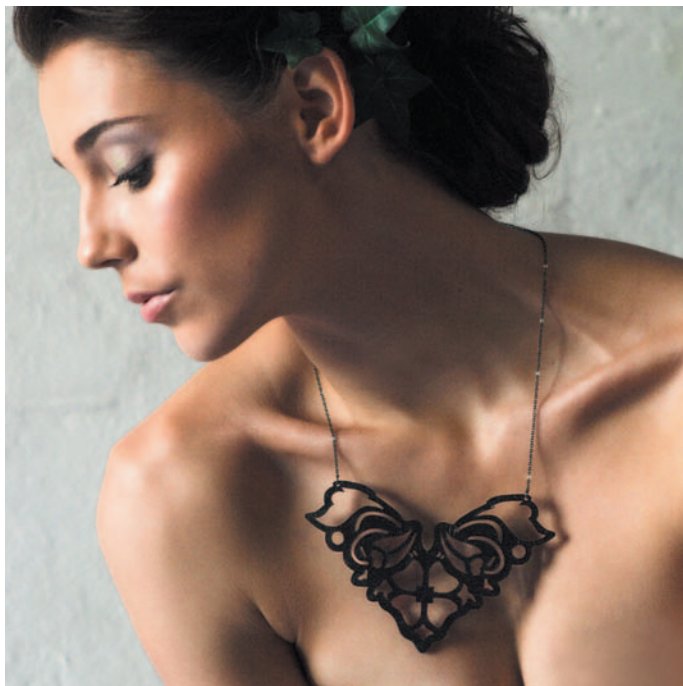
The name 'zoemou' translates to 'my life', and was given to artist Zoe Semack as a childhood nickname while living on the Greek Islands. She has been designing accessories for over ten years and launched her own label in 2005, producing a collection far from the mainstream.

An artist and gallery owner, Zoe appreciates form and uniqueness.

The third range, is inspired by the childrens classic 'The Secret Garden' by Hodgson Burnett (1901). Young children discover a magical garden behind wild ivy and as the garden blossoms and flourishes, so does the lives of the children.

'zoemou' is stocked in exclusive boutiques throughout Europe, Australia and New Zealand.





Forget me not

LEATHER COLOUR COMBINATIONS
BLACK - PEWTER - GOLD



Chrysanta

LEATHER COLOUR COMBINATIONS
BLACK - PEWTER - GOLD



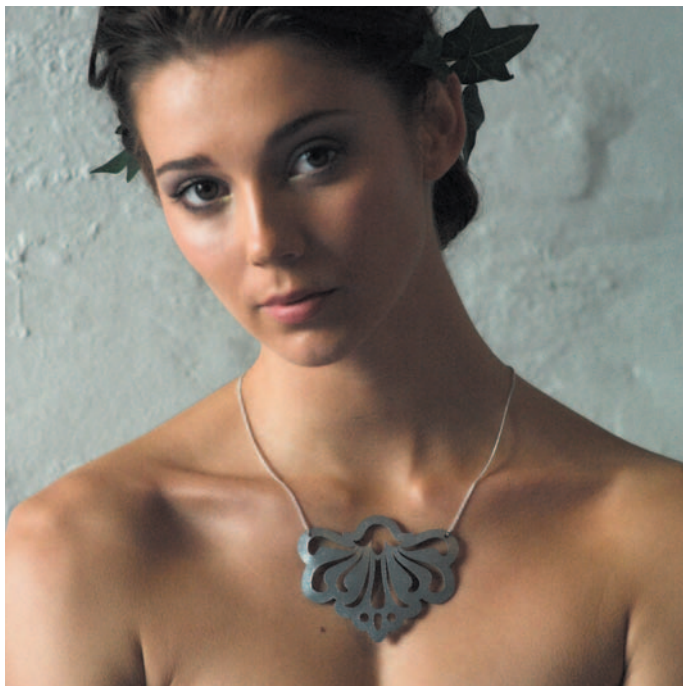
Iris

LEATHER COLOUR COMBINATIONS
BLACK - PEWTER - GOLD



Holly

LEATHER COLOUR COMBINATIONS
BLACK - PEWTER - GOLD



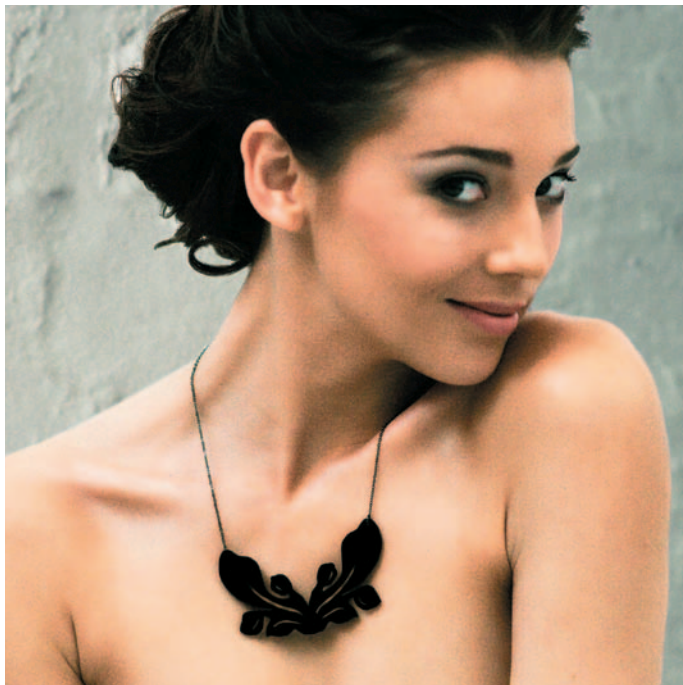
Peony

LEATHER COLOUR COMBINATIONS
BLACK - PEWTER - GOLD



Jasmine

LEATHER COLOUR COMBINATIONS
BLACK - PEWTER - GOLD



Lotus

LEATHER COLOUR COMBINATIONS
BLACK - PEWTER - GOLD



Violet

LEATHER COLOUR COMBINATIONS
BLACK - PEWTER - GOLD



Blossom

LEATHER COLOUR COMBINATIONS
BLACK - PEWTER - GOLD



packaging

Each zoemou necklace is delivered in a beautiful display box, the larger and medium styles are sold in a larger box with a stand up display backing. Each necklace comes with its own zoemou bird tag in either silver, black or gold.



contacts

info@zoemou.com

www.zoemou.com
16-18 dawson st,
surry hills nsw 2010
mob: +61 411 610 200

AUSTRALIA/NZ SALES:

nausz agency
letita nausz
485 malvern st
south yarra, vic, melb 3141
t: +613 9826 5400
fax: +613 9826 5433
letitia@nausz.com

PRESS:

out and about pr
samantha eaton
suite 16/94 oxford st,
darlinghurst nsw 2010
ph/fax: +61 2 9358 5353
mob: +61 414 90 80 78
samantha@outandaboutpr.com

